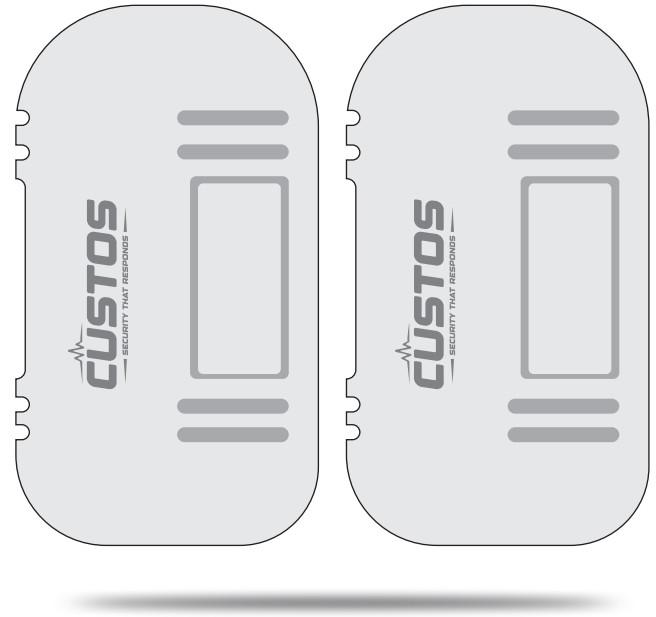


CUS-BS100-VER1.0

- Wireless Connectivity
- Active Infrared Beams
- Long-Range Detection
- Weatherproof Design
- Multiple Beam Configurations
- Low-Power / Battery Operated
- Alarm & Alerts
- Signal Reliability & Range
- Anti-Tamper Protection
- Adjustable Sensitivity & Alignment
- Integration with Security Systems
- Easy Installation & Setup



Technical Specification

MODEL	CUS-BS100-VER1.0
Beams	2*2
Lamp source	Infrared digital pulse
Sensor speed	50-700 msec adjustable
Outdoor alarm distance	20m-100m
Working voltage	DC/AC 12V~24V
Alert output	Replay contact output NO or NC
Contact Rating	DC30V,0.5Amax
Temperature	-25°C ~+65°C
Relative Humidity	≤95%RH, No condensation
Size	170mm*82mm*80mm
Tamper output	Contact output NC
Horizontal adjust	180° (±90°)
Vertical adjust	20° (± 10°)

*Product casing and specifications are subject to change without prior notice..

